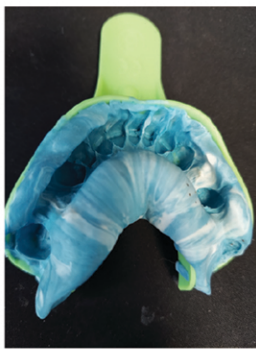


Included with your kit will be a set of **two (2) lower arch** and **two (2) upper arch trays** in two different sizes. Before starting **choose the size that best fits your mouth.** The tray should be large enough so the sides of the tray do not touch the front or back areas of your teeth. Also included are **3 sets of impression putty.** Lastly included is a **wax bite wafer.** Before mixing the two different colored putty's together be sure they are at room temperature.



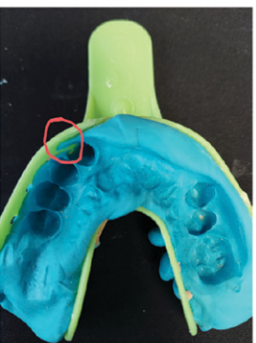
GOOD Notice the well defined teeth, no blurry area.



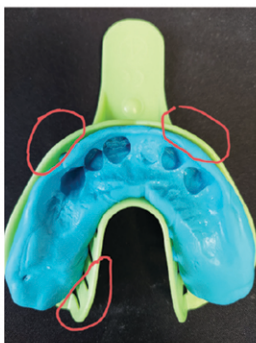
BAD Putty was not mixed well. Teeth are not clear. **Solution** - Mix well with your fingertips.



BAD Teeth were not pushed down enough. **Solution** - Push putty harder into your teeth.



BAD Teeth are touching tray. **Solution** - Make sure to align tray to your mouth or use a larger tray.



BAD Putty moved away from tray. **Solution** - Slightly push putty into tray before insertion.

NEED MORE PUTTY?

SCAN THE CODE



The DLD Team

Sincerely,

You've got your impression kit now it's time to start your journey. We put our hearts into making a great product and it starts with a good impression. If you have any questions about the impression taking process please reach out to us - info@DLDsmiles.com

PAY LESS. SMILE MORE.



IMPRESSION GUIDE



Dental Lab Direct
DLDsmiles.com



COPY THE LINK: [HTTPS://YOUTU.BE/GINSRPEVNTTE](https://youtu.be/ginsrpevnte)
OR SCAN THE CODE TO SEE OUR IMPRESSION TAKING VIDEO

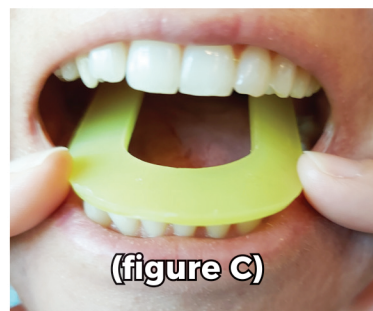




STEP 1

Before getting started be sure to thoroughly wash your hands and brush your teeth.

Having a timer is highly recommended



(figure C)

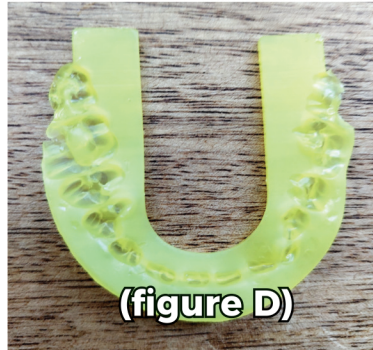
STEP 2

It's time to take your wax bite. You can soak the wax bite in warm water for 30 seconds to soften it.

Insert the wax bite wafer onto your lower teeth and bite down in your natural manner (figure C).

When taking out the wax wafer you should see teeth marks on both sides of the wafer (figure D).

Do not bend or fold the wax wafer.



(figure D)

STEP 3

Begin mixing the first set of white and blue (color may vary) putty quickly together with your fingertips. Be sure to blend them together until you see 1 solid color. Use all the putty included when mixing.



THIS STEP MUST TAKE 30 SECONDS OR LESS.

STEP 4

After putty is blended, roll it into a cylindrical shape about 4 inches long with your palms and place it into the tray.



THIS STEP MUST TAKE 20 SECONDS OR LESS

STEP 5

Once in the tray lightly push the putty down into the tray for better coverage.



THIS STEP MUST TAKE 10 SECONDS OR LESS

STEP 6

With your fingers, push the putty into your front and back teeth with strong and even force until all your teeth and gums are deeply submerged into the putty. It's okay if the tips of your teeth touch the top or bottom of the tray.



HOLD THE PUTTY IN YOUR MOUTH FOR 4:30 AND UNTIL COMPLETELY HARDENED. DO NOT PULL THE PUTTY OUT SOONER AS THIS WILL DISTORT THE MATERIAL.

Do not pull the putty out of the tray.

!!IMPORTANT!

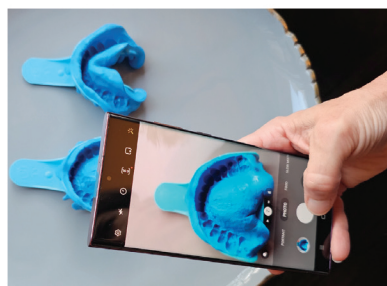
REPEAT STEP 6 FOR THE OPPOSITE ARCH

NOTE: It is required to make both top and bottom impressions. Failure to do so can lead to a poor fitting device.

STEP 7

Once you are happy with your impressions, take a clear photo of them. **DO NOT** send your impressions back to us without our approval as this could delay your order. We will respond within 24 hours (Mon-Fri).

Please send photos to SUPPORT@DLDSMILES.COM or scan here



STEP 8 UNITED STATES POSTAL SERVICE

When you're finished taking the wax bite and impressions it's time to send them to Dental Lab Direct. Rinse the items under room temperature tap water and place the items in the plastic bag. Fill out the order form and place the pre-paid USPS shipping label on the outside of the box. Seal the box up with the included DLD sticker and drop it off at your nearest mailbox or USPS post office. You can expect your custom-made dental appliance back in about 3 weeks.

QUICK TIPS

- Have the putty mixed and in your mouth within 1 minute.
- Make sure the putty is pushed above your gumline on your front and back teeth.
- HOLD the material in for the full 4 minutes and 30 seconds.
- After taking impressions send them out immediately.
- On the arch you are making a new appliance for, make sure to remove any dental appliances before taking your impression. On the opposite arch keep your dental appliance in your mouth while taking your impression.
- As long as you follow the instructional steps, your impression will turn out great. The whole process should not take more than 20 minutes. We're here for you every step of the way so if you have any questions send us an e-mail or give us a call at [888-591-2220](tel:888-591-2220).