



TEETH IMPRESSION GUIDE



COPY THE LINK:
[HTTPS://YOUTU.BE/GINSRPEVNTE](https://youtu.be/ginsrpevnte)
OR SCAN THE CODE
TO SEE OUR IMPRESSION TAKING VIDEO



Dental Lab Direct

[DLDsmiles.com](https://www.DLDsmiles.com)

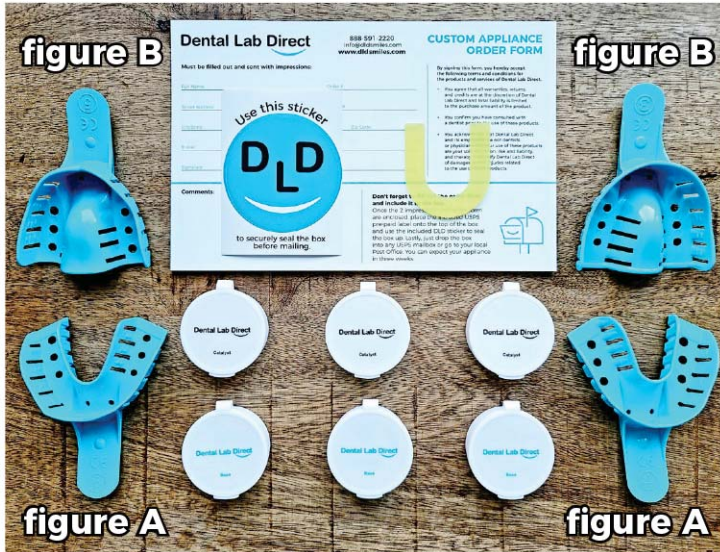
PAY LESS. SMILE MORE.

*You've got your impression kit now it is time to start your journey. We put our hearts into making a great product and it starts with a good impression. If you have any questions about the impression taking process please reach out to us - **info@DLDSmiles.com***

Sincerely,

The DLD Team



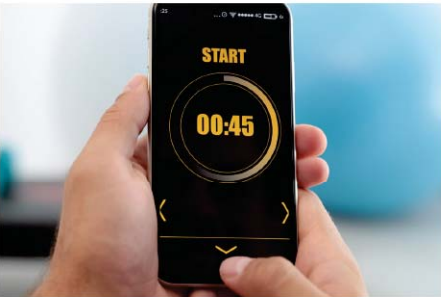


Included with your kit will be a set of two (2) lower arch (figure A.) and two (2) upper arch (figure B.) trays in two different sizes.

Before starting choose the size that best fits your mouth.

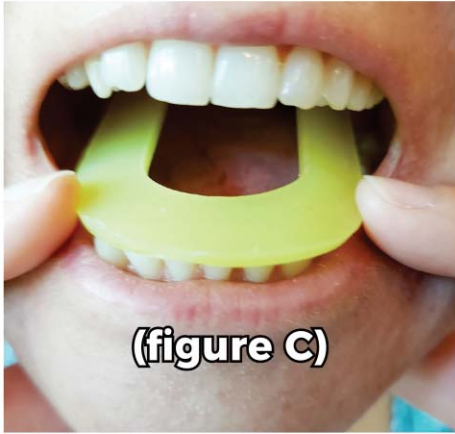
The tray should be large enough so the sides of the tray do not touch the front or back areas of your teeth.

Also included are 3 sets of impression putty. Lastly included is a wax bite wafer. Before mixing the two different colored putty's together be sure they are at room temperature.



STEP 1

Before getting started be sure to thoroughly wash your hands and brush your teeth. Having a timer is highly recommended



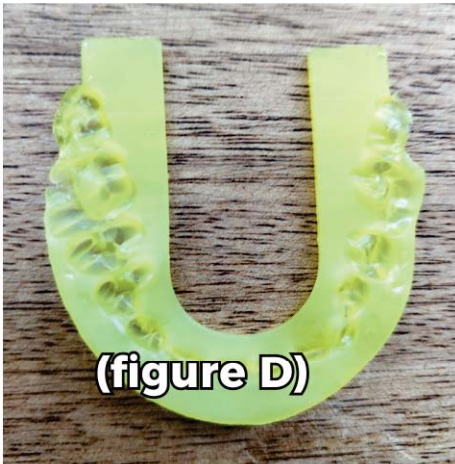
STEP 2

It's time to take your wax bite. You can soak the wax bite in warm water for 30 seconds to soften it.

Insert the wax bite wafer onto your lower teeth and bite down in your natural manner (figure C).

When taking out the wax wafer you should see teeth marks on both sides of the wafer (figure D).

Do not bend or fold the wax wafer.





STEP 3

Begin to mix the first set of white and blue putty vigorously together with your fingertips. Make sure to blend them until a solid color forms. Use all the putty included when mixing.



THIS STEP MUST TAKE LESS THAN 30 SECONDS.



STEP 4

After putty is blended, roll it into a cylindrical shape about 4 inches long with your palms and place it into the tray.



THIS STEP MUST TAKE LESS THAN 20 SECONDS.



STEP 5

Once in the tray, lightly push down on the putty for better coverage.



THIS STEP MUST TAKE LESS THAN 20 SECONDS.

STEP 6

Now it's time to place the tray into your mouth. When inserting the tray make sure your teeth are NOT touching any borders of the tray.

USE STRONG AND EVEN FORCE UNTIL ALL YOUR TEETH AND GUMS ARE DEEPLY SUBMERGED INTO THE PUTTY.

While the putty is hardening keep your thumbs on the bottom of the tray for support.



DO NOT move the tray while the putty is hardening.

KEEP THE TRAY IN YOUR MOUTH FOR 4:00 MINUTES UNTIL THE MATERIAL IS FULLY HARDENED.

When finished leave the material in the tray, DO NOT pull putty out of the tray.

STEP 7

REPEAT IMPRESSION TAKING PROCESS WITH YOUR OPPOSITE ARCH.

PLEASE MAKE BOTH UPPER AND LOWER IMPRESSIONS UNLESS NOTED OTHERWISE.

NOTE: The reason DLD needs both upper and lower impressions is so we can align your new appliance properly. Without both impressions your appliance might not function or fit properly.



STEP 8

When you're finished taking the wax bite and impressions it's time to send them to Dental Lab Direct.

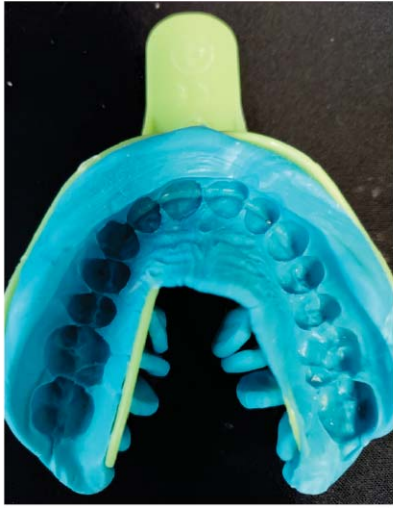
Rinse the items under room temperature tap water and place the items in the plastic bag.

Fill out the order form and place the pre-paid USPS shipping label on the outside of the box. Seal the box up with the included DLD sticker and drop it off at your nearest mailbox or USPS post office. You can expect your custom-made dental appliance back in about 3 weeks.

QUICK TIPS

NOTE: Included is an extra set of putty. Use this if you feel you need to remake another impression or be sure to make another impression on the arch you are making your appliance for.

- After taking impressions make sure to send them out immediately.
- On the arch you are making a new appliance for, make sure to remove any dental appliances before taking your impression. On the opposite arch keep your dental appliance in your mouth while taking your impression.
- If you're still not sure how your impression turned out, you can always snap a photo of the impression with your smartphone and send it to info@dldsmiles.com
- As long as you follow the instructional steps, your impression will turn out great. The whole process should not take more than 20 minutes. We're here for you every step of the way so if you have any questions send us an e-mail or give us a call at [888-591-2220](tel:888-591-2220).



GOOD Notice the well defined teeth, no blurry area.



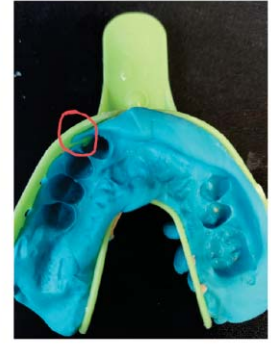
BAD Putty was not mixed well
Teeth are not clear.
Solution - Mix well with your fingertips.



BAD Putty moved away from tray.
Solution - Slightly push putty into tray before insertion.



BAD Teeth were not pushed down enough.
Solution - Push putty harder into your teeth.



BAD Teeth are touching tray.
Solution - Make sure to align tray to your mouth or use a larger tray.

NEED MORE PUTTY?

You can always order more putty on the accessories page at:

<https://dentallab-direct.com/product/impression-putty-6-oz-copy>

or scan the barcode:

